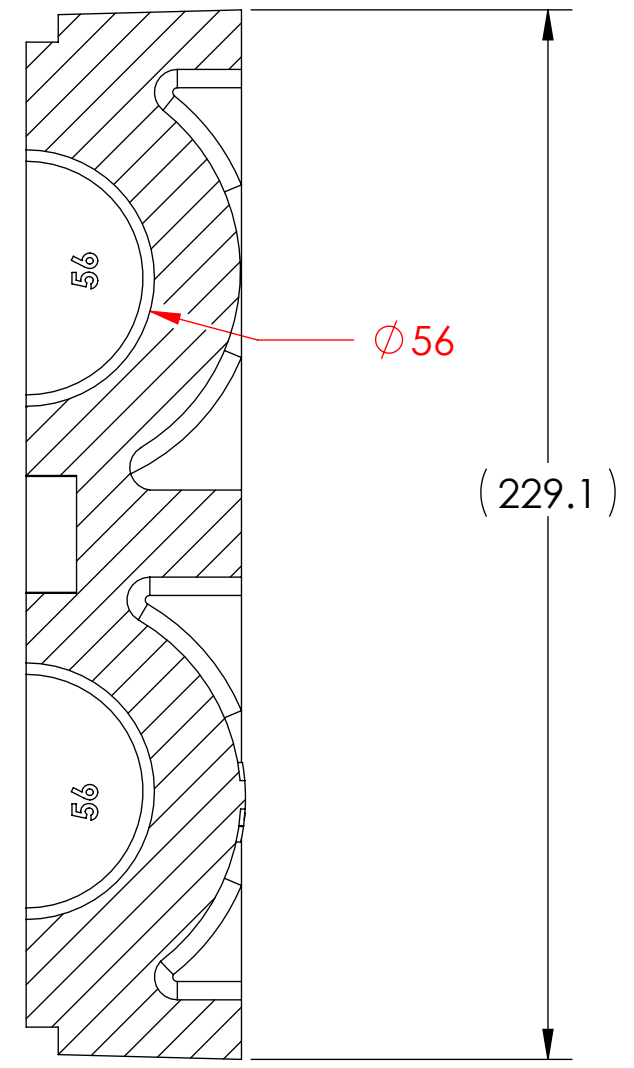
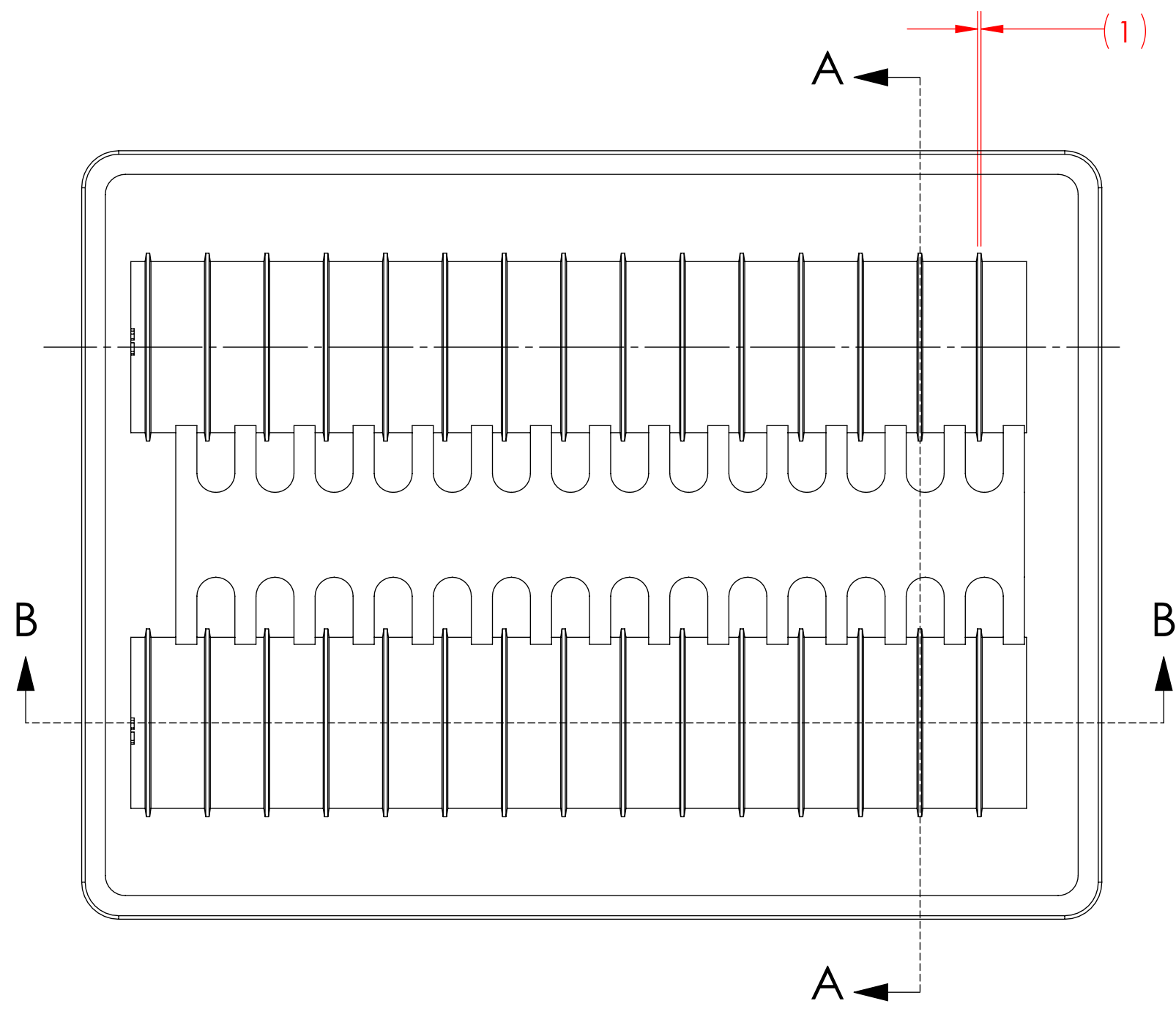


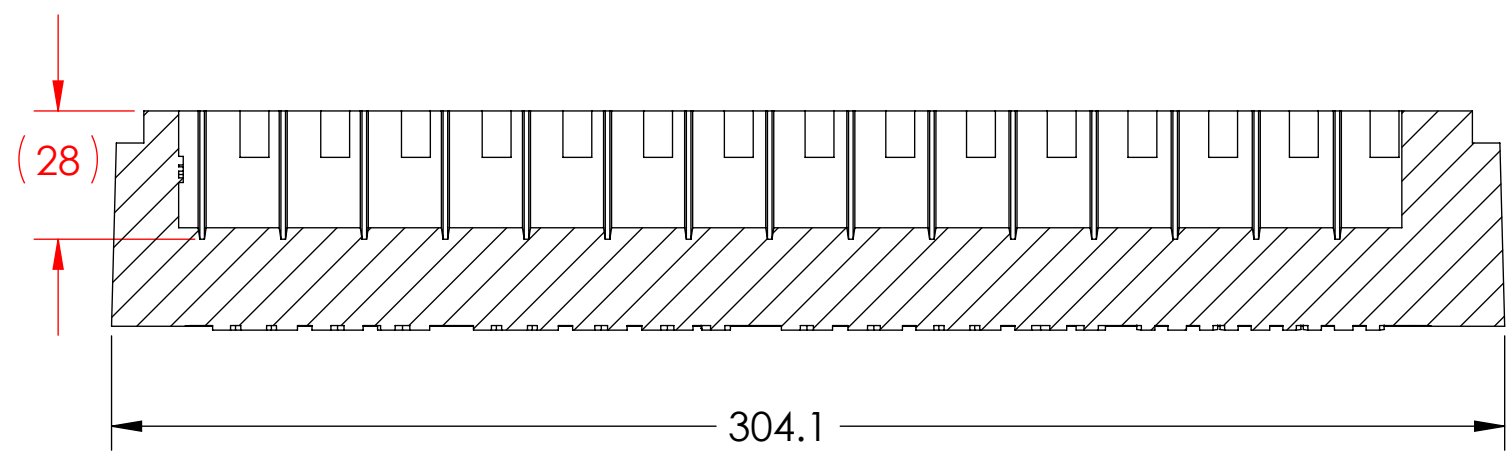
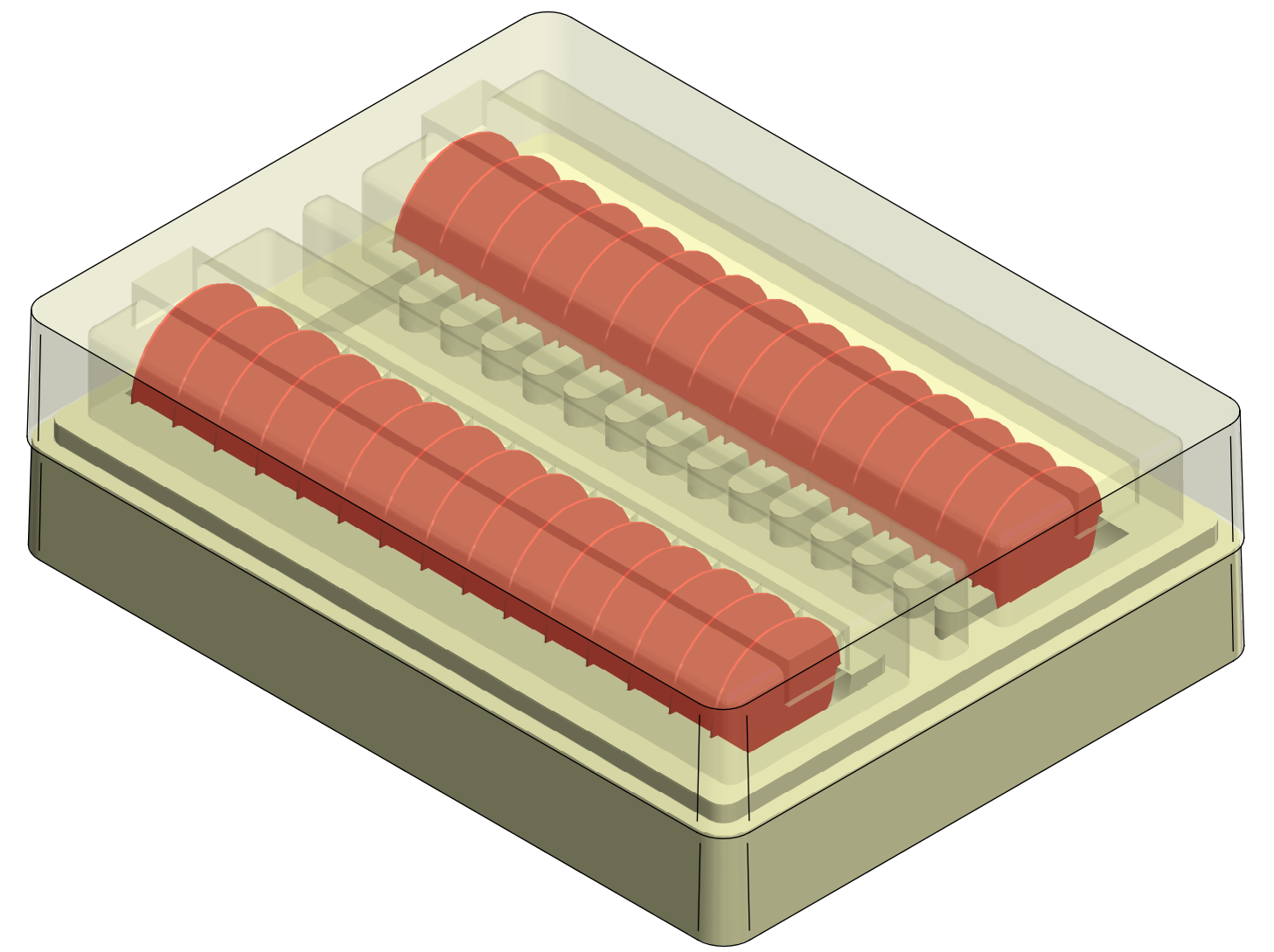
8 7 6 5 4 3 2 1

F
E
D
C
B
A

F
E
D
C
B
A



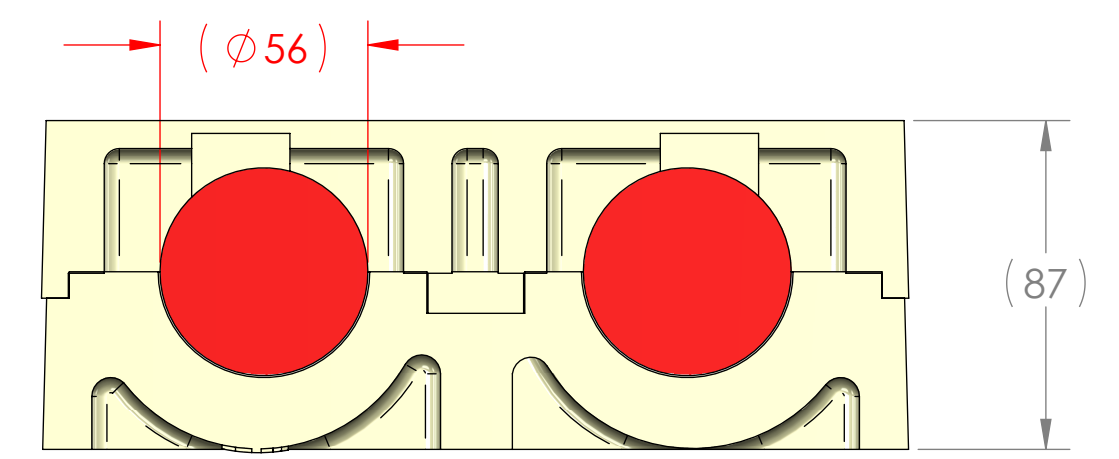
SECTION A-A
SCALE 1 : 1.65



SECTION B-B
SCALE 1 : 1.65

Note:

- 1) Material To be 64g/l density (4.0 lb/ft³) EPS, Static Dissipative
- 2) Dimensions shown are in millimeters



PROPRIETARY AND CONFIDENTIAL
THE INFORMATION CONTAINED IN THIS DRAWING IS THE SOLE PROPERTY OF TEMPO PLASTIC CO., INC. ANY REPRODUCTION IN PART OR AS A WHOLE WITHOUT THE WRITTEN PERMISSION OF TEMPO PLASTIC CO., INC. IS PROHIBITED.

UNLESS OTHERWISE SPECIFIED:		NAME	DATE	TEMPO PLASTIC CO., INC. 1227 N. MILLER PARK COURT VISALIA, CA 93291 TITLE: <h2 style="text-align: center;">#30R-2215</h2>	
DIMENSIONS ARE IN MM		DRAWN	JR		2/13/18
TOLERANCES:		CHECKED			
FRACTIONAL ± ANGULAR: MATCH ± BEND ± TWO PLACE DECIMAL ± THREE PLACE DECIMAL ±		ENG APPR.			
INTERPRET GEOMETRIC TOLERANCING PER:		Q.A.			
MATERIAL		COMMENTS:			
NEXT ASSY	USED ON	FINISH			
APPLICATION		DO NOT SCALE DRAWING			
SIZE	DWG. NO.	REV			
C		A			
SCALE: 1:2	WEIGHT:	SHEET 1 OF 1			