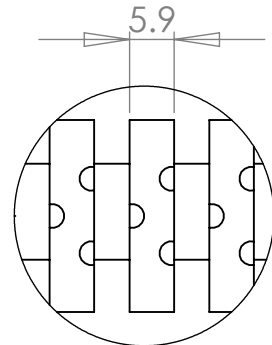
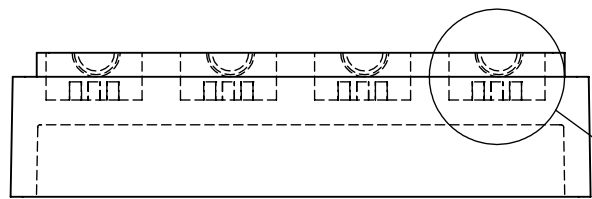
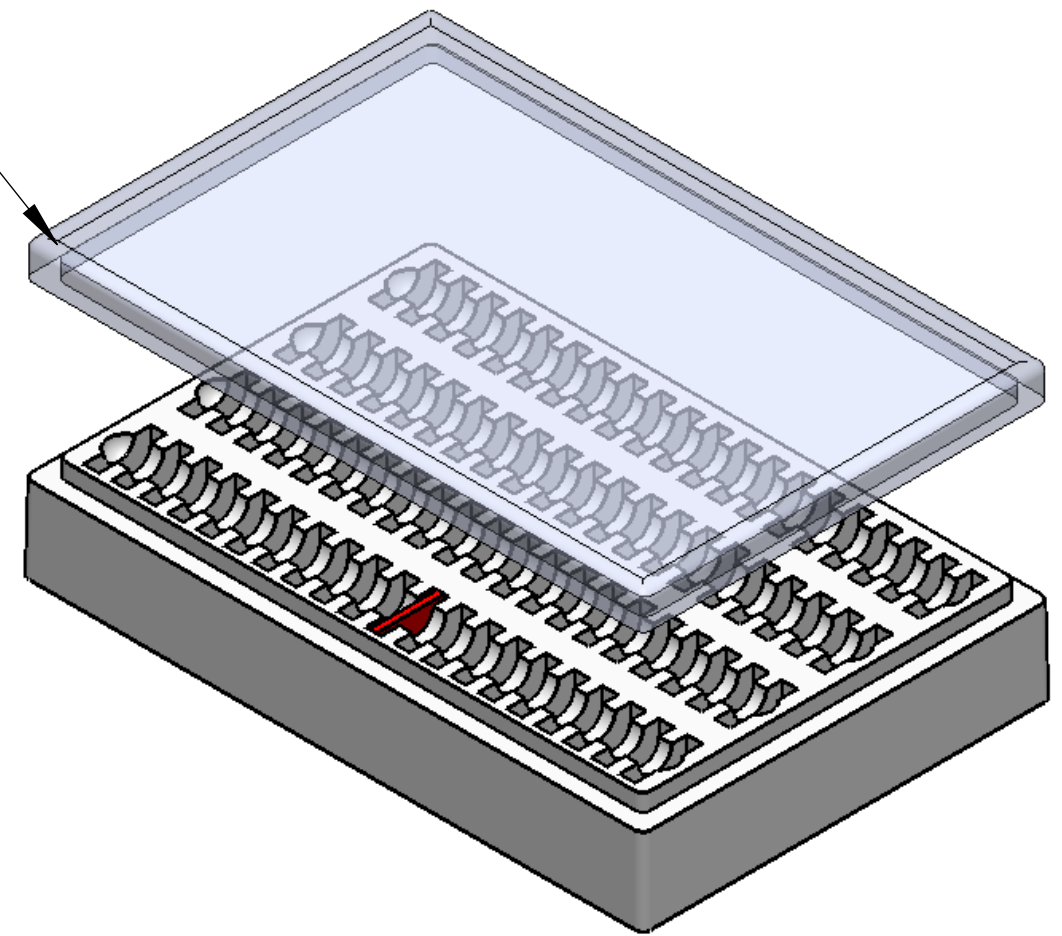


TOP VIEW OF BASE

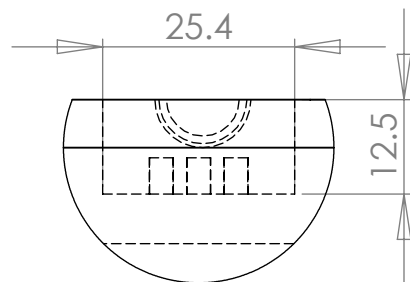
TRANSPARENT LID SHOWS SLOTS FOR 80 PCS.



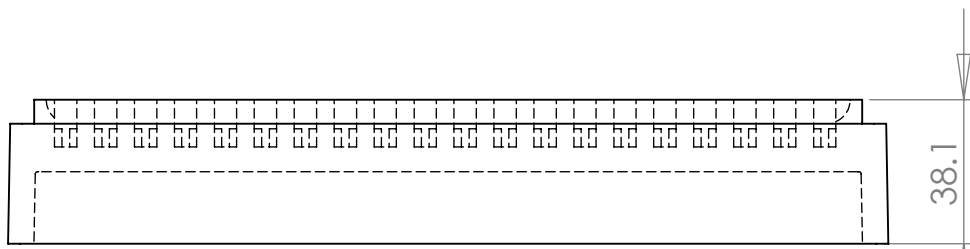
DETAIL A  
SCALE 1 : 1



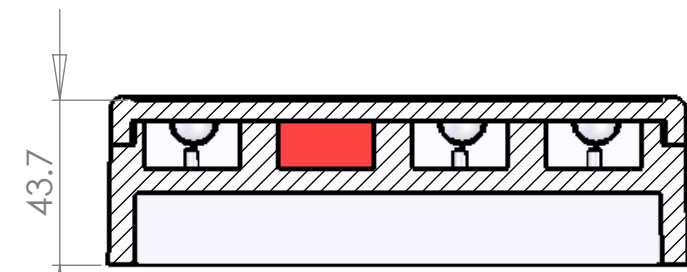
FRONT VIEW OF BASE



DETAIL B  
SCALE 1 : 1



SIDE VIEW OF BASE



CUT SECTION WITH PART IN PLACE

**Note:**

- 1) Material To be 64g/l density (4.0 lb/ft<sup>3</sup>) EPS, Static Dissipative
- 2) 1 Degree Draft TYP
- 3) Dimensions shown are in millimeters

**PROPRIETARY AND CONFIDENTIAL**  
THE INFORMATION CONTAINED IN THIS DRAWING IS THE SOLE PROPERTY OF **Tempo Plastic Co., Inc.** ANY REPRODUCTION IN PART OR AS A WHOLE WITHOUT THE WRITTEN PERMISSION OF **Tempo Plastic Co., Inc.** IS PROHIBITED.

		UNLESS OTHERWISE SPECIFIED:		NAME	DATE	<b>Tempo Plastic Co., Inc.</b>	
		DIMENSIONS ARE IN INCHES TOLERANCES: FRACTIONAL ± ANGULAR: MACH ± BEND ± TWO PLACE DECIMAL ± THREE PLACE DECIMAL ±		DRAWN	Steven Alatorre		
		INTERPRET GEOMETRIC TOLERANCING PER:		CHECKED		TITLE:	
		MATERIAL		ENG APPR.		109 Base with 102 Lid	
		FINISH		MFG APPR.		SIZE DWG. NO. REV	
NEXT ASSY	USED ON	DO NOT SCALE DRAWING		Q.A.		SCALE: 1:2 SHEET 1 OF 1	
APPLICATION				COMMENTS:			