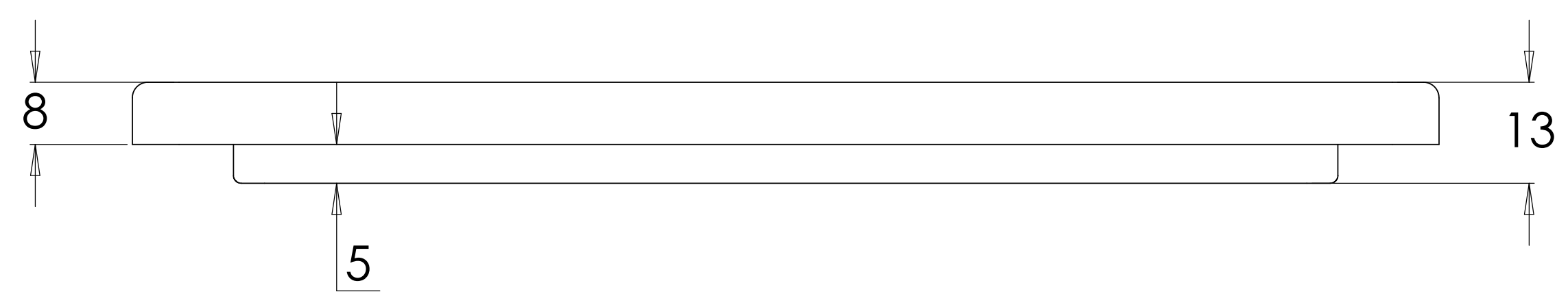
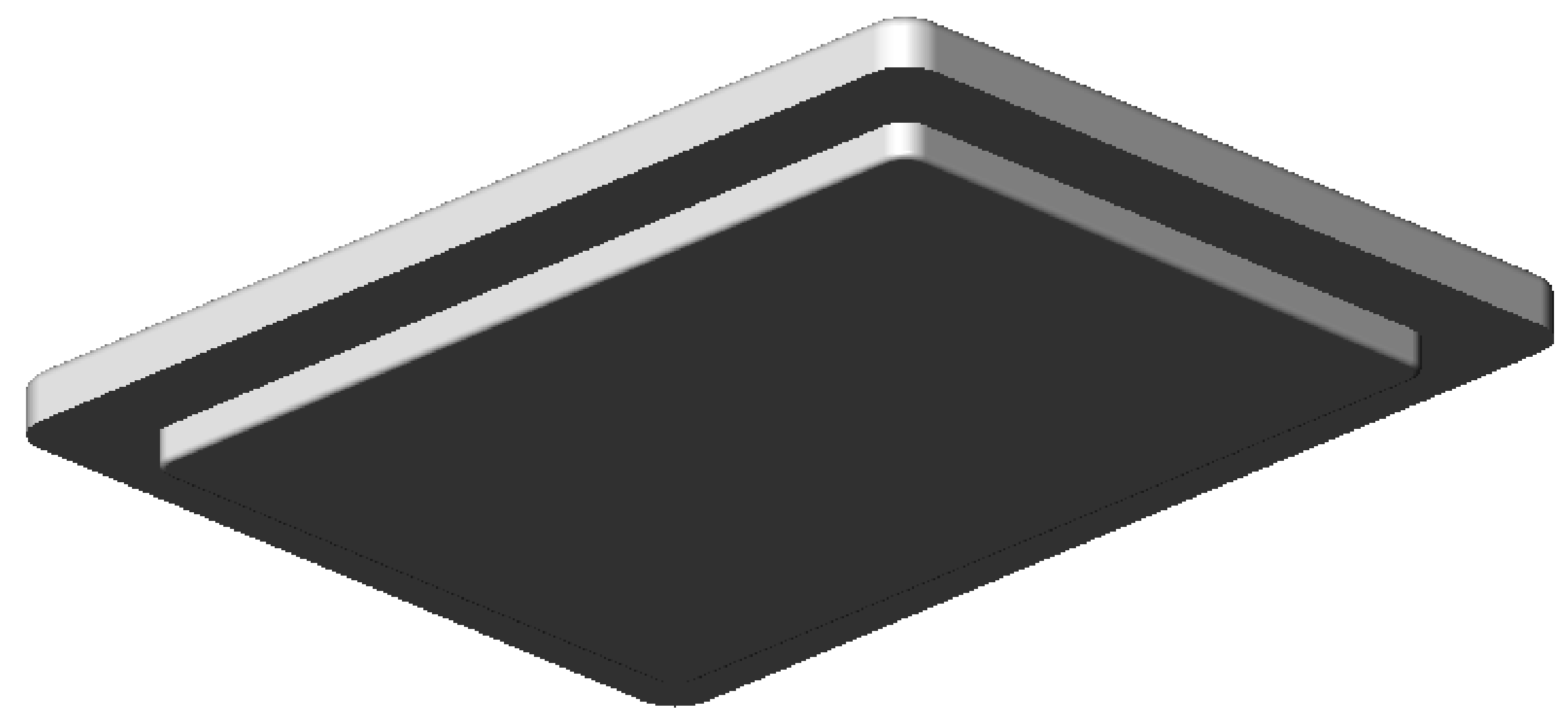


SECTION A-A
SCALE 1.5:1



Note:

- 1) Material To be 64g/l density (4.0 lb/ft³) EPS
- 2) 1 Degree Draft TYP
- 3) Volume = 14.49 cubic inches

PROPRIETARY AND CONFIDENTIAL
THE INFORMATION CONTAINED IN THIS DRAWING IS THE SOLE PROPERTY OF Tempco Plastics Co., Inc. ANY REPRODUCTION IN PART OR AS A WHOLE WITHOUT THE WRITTEN PERMISSION OF Tempco Plastics Co., Inc. IS PROHIBITED.

UNLESS OTHERWISE SPECIFIED:		NAME	DATE
DIMENSIONS ARE IN Millimeters		Junior	8/16/05
TOLERANCES:			
FRACTIONAL ±		CHECKED	
ANGULAR MATCH ±	BEND ±	ENG APPR.	
TWO PLACE DECIMAL ±		MFG APPR.	
THREE PLACE DECIMAL ±			
INTERPRET GEOMETRIC TOLERANCING PER:		Q.A.	
MATERIAL		COMMENTS:	
NEXT ASSY	USED ON		
APPLICATION			

TITLE:		
TPC554Lid		
SIZE	DWG. NO.	REV
D	1	
SCALE: 1.5:1		SHEET 1 OF 1

REV TPC554Lid