



## SUMMARY

This report includes the information necessary to identify and remove the control system wiring used on the TEMPO Precision Molded Foam compression power plant, and to correctly reinstall the controls and control system as it is currently configured. Each wire is identified individually and the connections are traced inside the Main Control Panel. Where possible, the other end of each wire is also documented. The drawing will note if the connection pattern at the other end of the wire needs to be verified during the disassembly process.

All control wires are connected at the Main Control Panel. The Main Control Panel wire access holes are numbered and used as the basis for wire traceability. The drawing package included here starts with a plan view of the installed power plant components correlated to photos taken onsite. A drawing of the Main Control Cabinet shows the numbering pattern on front, side, top and bottom views. To review any given control wire all that is necessary is to use the access hole number to identify the proper detail drawing and use the plan view to locate each connection of the wire.

A description of each drawing is included in the Table of Contents.

Engine Data Plate:	PN 340096-1 MDL 11851-1000 SN QE-1
Gearbox Data Plate:	MDL 11851-1000 SN QGB-1 PN 340036-1B SPEED 1800 RPM
Generator Data Plate:	International Electric Corp San Marcos, Tx MDL G424UET-229 S/N KE-4221 Cont KW 500 KVA 625 Amps 752 Volts 277V480 RPM 1800

## TABLE OF CONTENTS

Page or Drawing	Description
COGENERATOR SYSTEMS LAYOUT	Plan view of the power plant as it is installed, identifying the major components both on a drawing and in photographs.
564 MAIN	Front, side, top and bottom views of the Main Control Cabinet identifying wire access holes with an alphanumeric tag.
564 JBOX	Schematic of the (2) Junction Boxes that are used to mate control wiring between major components.
564 BATT	Schematic of Backup Battery connections.
564 LS	Schematic of wire routing on the left side of the Main Control Panel.
564 RS1	Schematic of wire routing on the right side of the Main Control Panel.
564 TH1 thru 564 TH5	Schematic of wire routing out the top of the Main Control Panel. (NOTE: Hole T6 is identified on 564 MAIN but is not used and does not have a drawing.)
564 G	A series of gray wire cables exit from hole TH8, route through a conduit and connect to the power plant. These wires are identified at their connection points but not through the conduit. This schematic shows the routing outside of the Main Control Panel.
564 G1 thru 564 G8, 564 GM	Schematics of the gray wire cables as they attach in the Main Control Panel. Each wire will need to be traced during disassembly, as noted on the drawings.
564 W	A series of white wire cables exit from hole TH8, some of which route through a conduit and connect to the power plant. These wires are identified at their connection points but not through the conduit. This schematic shows the routing outside of the Main Control Panel.
564 W1 thru 564 W5	Schematics of the white wire cables as they attach in the Main Control Panel. Wires passing through the conduit will need to be traced during disassembly, as noted on the drawings.
564 BH1 thru 564 BH5	Schematic of wire routing on the bottom of the Main Control Panel. (NOTE: Hole BH2 is identified on 564 BATT and does not have a drawing.)

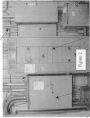


MAIN CONTROL CABINET

TRUCK 1

CIRCUIT BREAKER

TRUCK 2



BATTERY FUSE BEDS

BACKUP BATTERY BOX

MAIN POWER CABINET



POWER SELECTOR CABINET

TURBINE GEARBOX

TURBINE

BOILER

COGENERATOR SYSTEMS LAYOUT  
ENGINEERING  
MAJOR COMPONENTS

4 3 2 1

D C B A



**NOTE:**

This drawing shows the wiring access holes in the PMS Control Cabinet. Each hole is labeled. The wiring schematics for each labeled hole can be found on a separate drawing. For example, to trace the wire in hole 101, see drawing 304101.



NO.	DESCRIPTION	SIZE	NO.	DESCRIPTION	SIZE
1	120V - 80 WATT	1/2"	1	120V - 80 WATT	1/2"
2	120V - 80 WATT	1/2"	2	120V - 80 WATT	1/2"
3	120V - 80 WATT	1/2"	3	120V - 80 WATT	1/2"
4	120V - 80 WATT	1/2"	4	120V - 80 WATT	1/2"
5	120V - 80 WATT	1/2"	5	120V - 80 WATT	1/2"
6	120V - 80 WATT	1/2"	6	120V - 80 WATT	1/2"
7	120V - 80 WATT	1/2"	7	120V - 80 WATT	1/2"
8	120V - 80 WATT	1/2"	8	120V - 80 WATT	1/2"
9	120V - 80 WATT	1/2"	9	120V - 80 WATT	1/2"
10	120V - 80 WATT	1/2"	10	120V - 80 WATT	1/2"
11	120V - 80 WATT	1/2"	11	120V - 80 WATT	1/2"
12	120V - 80 WATT	1/2"	12	120V - 80 WATT	1/2"
13	120V - 80 WATT	1/2"	13	120V - 80 WATT	1/2"
14	120V - 80 WATT	1/2"	14	120V - 80 WATT	1/2"
15	120V - 80 WATT	1/2"	15	120V - 80 WATT	1/2"
16	120V - 80 WATT	1/2"	16	120V - 80 WATT	1/2"
17	120V - 80 WATT	1/2"	17	120V - 80 WATT	1/2"
18	120V - 80 WATT	1/2"	18	120V - 80 WATT	1/2"
19	120V - 80 WATT	1/2"	19	120V - 80 WATT	1/2"
20	120V - 80 WATT	1/2"	20	120V - 80 WATT	1/2"

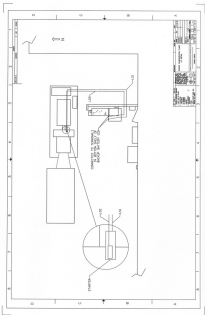
4 3 2 1

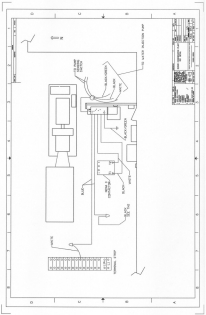
D C B A

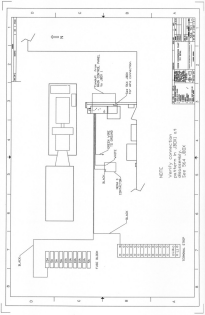








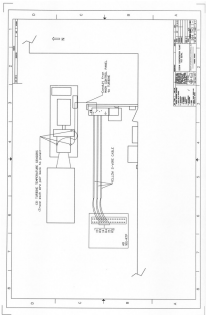




NOTE:  
Verify connection  
patterns in JB031 at  
assembly  
assembly  
for 354 JB0

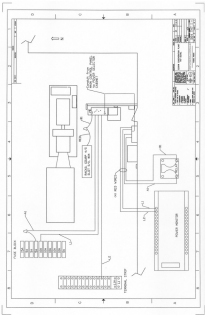
354 JB0
Rev. 1.0
Date: 11/15/00
Author: J. L. H.
Checked: J. L. H.
Approved: J. L. H.
Title: 354 JB0









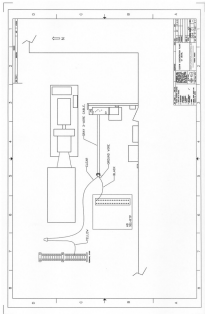


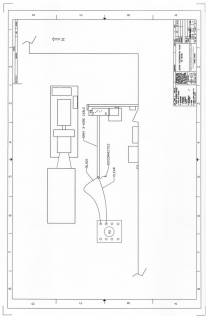


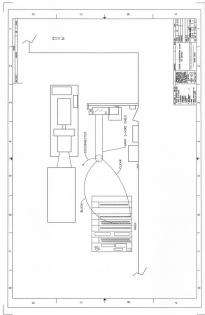


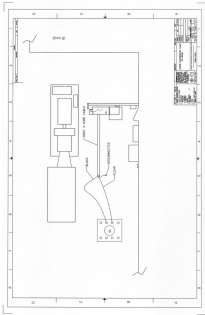




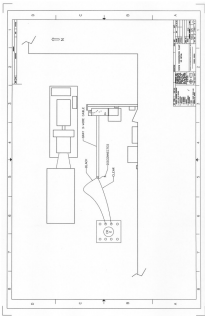




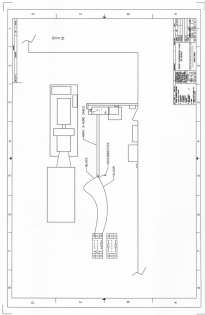


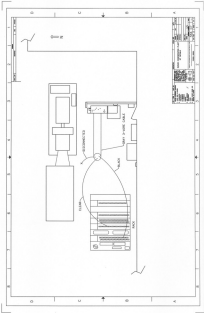


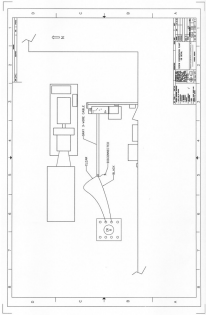
NO.	DESCRIPTION	QTY.	UNIT	REMARKS
1	Table	1	PC	
2	Chair	1	PC	
3	Desk	1	PC	
4	Control Panel	1	PC	
5	Blank	1	PC	
6	Desk-Chairs	1	PC	
7	Closet	1	PC	
8	Only 1 Side Table	1	PC	

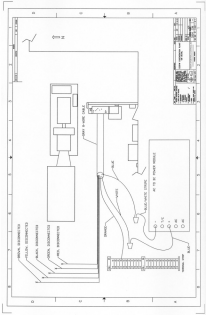


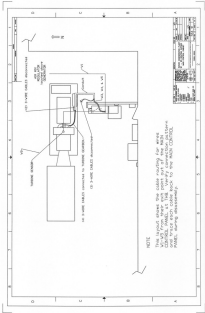


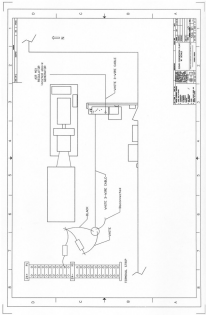


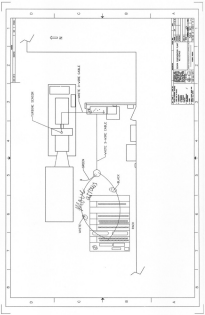


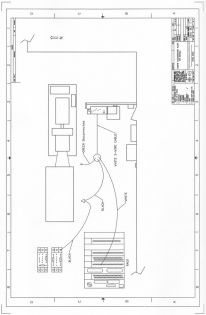












1	2	3	4	5	6
1	2	3	4	5	6
1	2	3	4	5	6
1	2	3	4	5	6

1	2	3	4	5	6
1	2	3	4	5	6
1	2	3	4	5	6
1	2	3	4	5	6
1	2	3	4	5	6
1	2	3	4	5	6

1  
2  
3  
4  
5  
6

VIDEO Recorder

CABLE

VIDEO

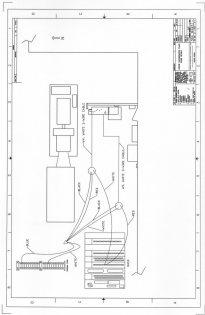
BLACK

BLACK

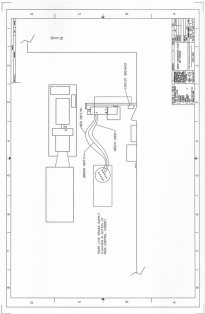
BLACK

1 2 3 4 5 6





NO.	DESCRIPTION	QUANTITY	UNIT	REMARKS
1	SERVER RACK	1	UNIT	
2	SERVER CABINET	1	UNIT	
3	COMPUTER	1	UNIT	
4	POWER STRIP	1	UNIT	
5	RJ45 CABLE	3	PAIRS	
6	PDU CABLE	1	PAIR	
7	POWER CABLE	1	PAIR	
8	LAN CABLE	1	PAIR	
9	WALL	1	UNIT	
10	DOOR	1	UNIT	
11	SWITCH	1	UNIT	
12	OUTLET	1	UNIT	
13	RECEPTACLE	1	UNIT	



SEE LIST UNDER WORK  
SCHEDULED WORK

GREEN WIRE

BLACK WIRE

CIRCUIT BREAKER

SERIAL LINE

