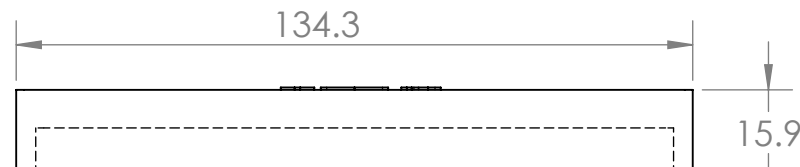
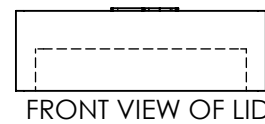




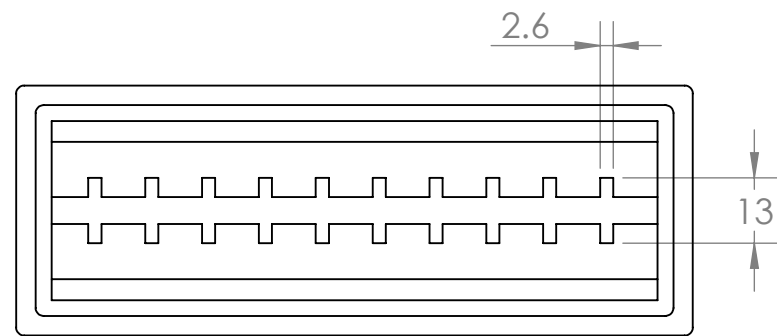
TOP VIEW OF LID



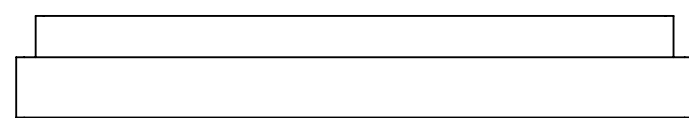
SIDE VIEW OF LID



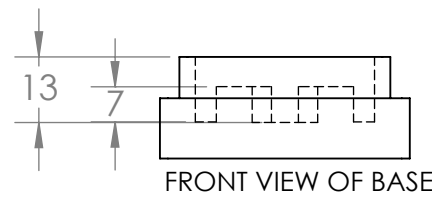
FRONT VIEW OF LID



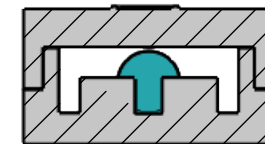
TOP VIEW OF BASE



SIDE VIEW OF BASE

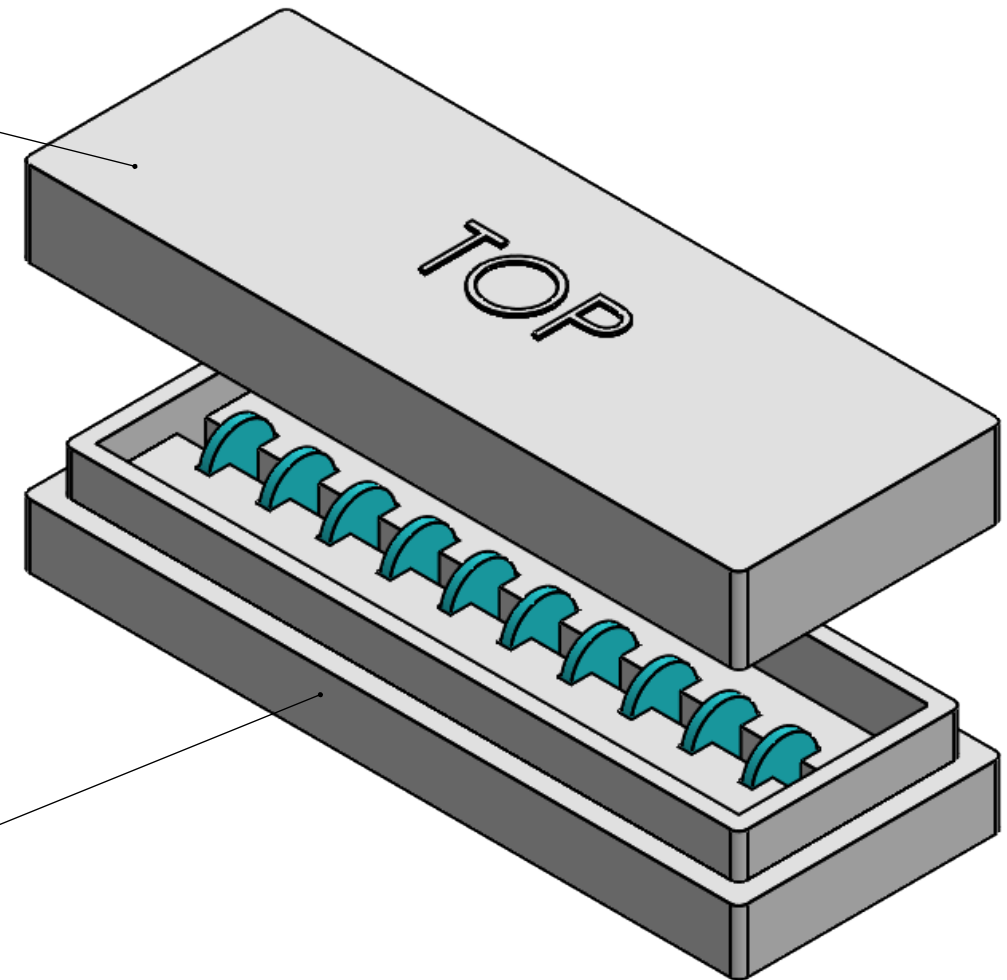


FRONT VIEW OF BASE



BASE WITH 10 ROUND WAFER

LID



**Note:**

- 1) Material To be 64g/l density (4.0 lb/ft<sup>3</sup>) EPS, Static Dissipative
- 2) 1 Degree Draft TYP
- 3) Dimensions shown are in millimeters

**PROPRIETARY AND CONFIDENTIAL**  
 THE INFORMATION CONTAINED IN THIS DRAWING IS THE SOLE PROPERTY OF Tempo Plastic Co., Inc. ANY REPRODUCTION IN PART OR AS A WHOLE WITHOUT THE WRITTEN PERMISSION OF Tempo Plastic Co., Inc. IS PROHIBITED.

		UNLESS OTHERWISE SPECIFIED:		NAME	DATE	<b>Tempo Plastic Co., Inc.</b>	
		DIMENSIONS ARE IN INCHES TOLERANCES: FRACTIONAL ± ANGULAR: MACH ± BEND ± TWO PLACE DECIMAL ± THREE PLACE DECIMAL ±		DRAWN	Matthew		
		INTERPRET GEOMETRIC TOLERANCING PER:		CHECKED		TITLE: <b>10S-500</b>	
		MATERIAL		ENG APPR.		SIZE DWG. NO. REV	
		FINISH		MFG APPR.		SCALE: 1:1.5 SHEET 1 OF 1	
NEXT ASSY	USED ON	DO NOT SCALE DRAWING		Q.A.			
APPLICATION				COMMENTS:			