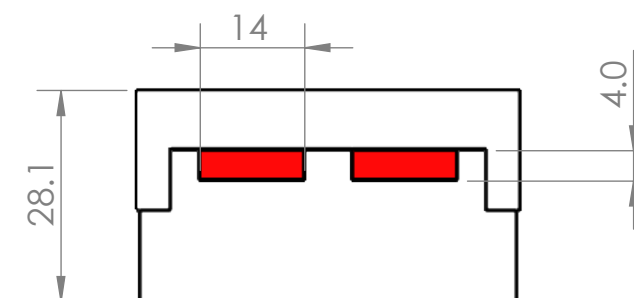


Note:

- 1) Material To be 64g/l density (4.0 lb/ft³) Static Dissipative EPS.
- 2) 1 Degree Draft TYP.
- 3) Dimensions shown are in millimeters



PROPRIETARY AND CONFIDENTIAL
 THE INFORMATION CONTAINED IN THIS DRAWING IS THE SOLE PROPERTY OF <INSERT COMPANY NAME HERE>. ANY REPRODUCTION IN PART OR AS A WHOLE WITHOUT THE WRITTEN PERMISSION OF <INSERT COMPANY NAME HERE> IS PROHIBITED.

		UNLESS OTHERWISE SPECIFIED:		NAME	DATE	Tempo Plastic Co.	
		DIMENSIONS ARE IN INCHES		DRAWN	JUNIOR	10/18/23	TITLE:
		TOLERANCES:		CHECKED			#10S-550
		FRACTIONAL ±		ENG APPR.			SIZE DWG. NO. REV
		ANGULAR: MACH ± BEND ±		MFG APPR.			B
		TWO PLACE DECIMAL ±		Q.A.			SCALE: 2:3 WEIGHT: SHEET 1 OF 1
		THREE PLACE DECIMAL ±		COMMENTS:			
		INTERPRET GEOMETRIC TOLERANCING PER:					
		MATERIAL					
NEXT ASSY	USED ON	FINISH					
APPLICATION		DO NOT SCALE DRAWING					