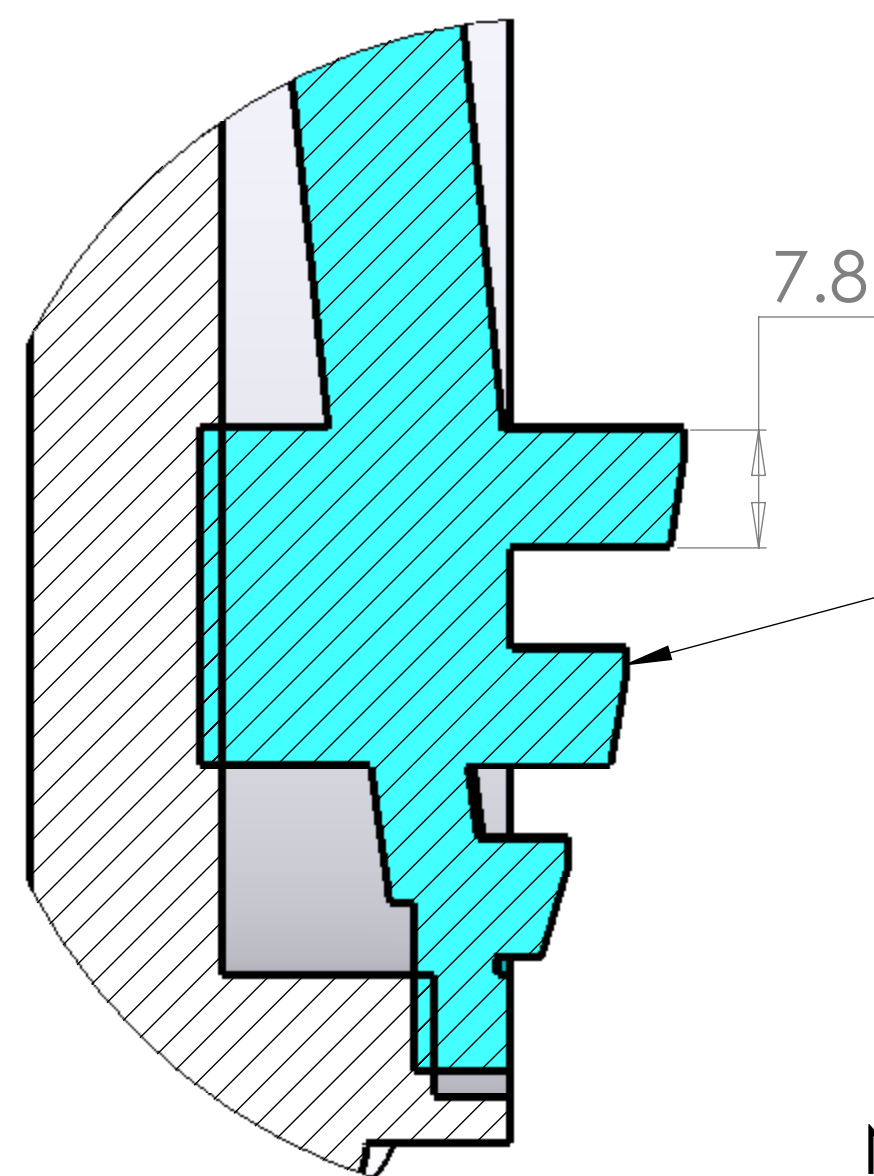
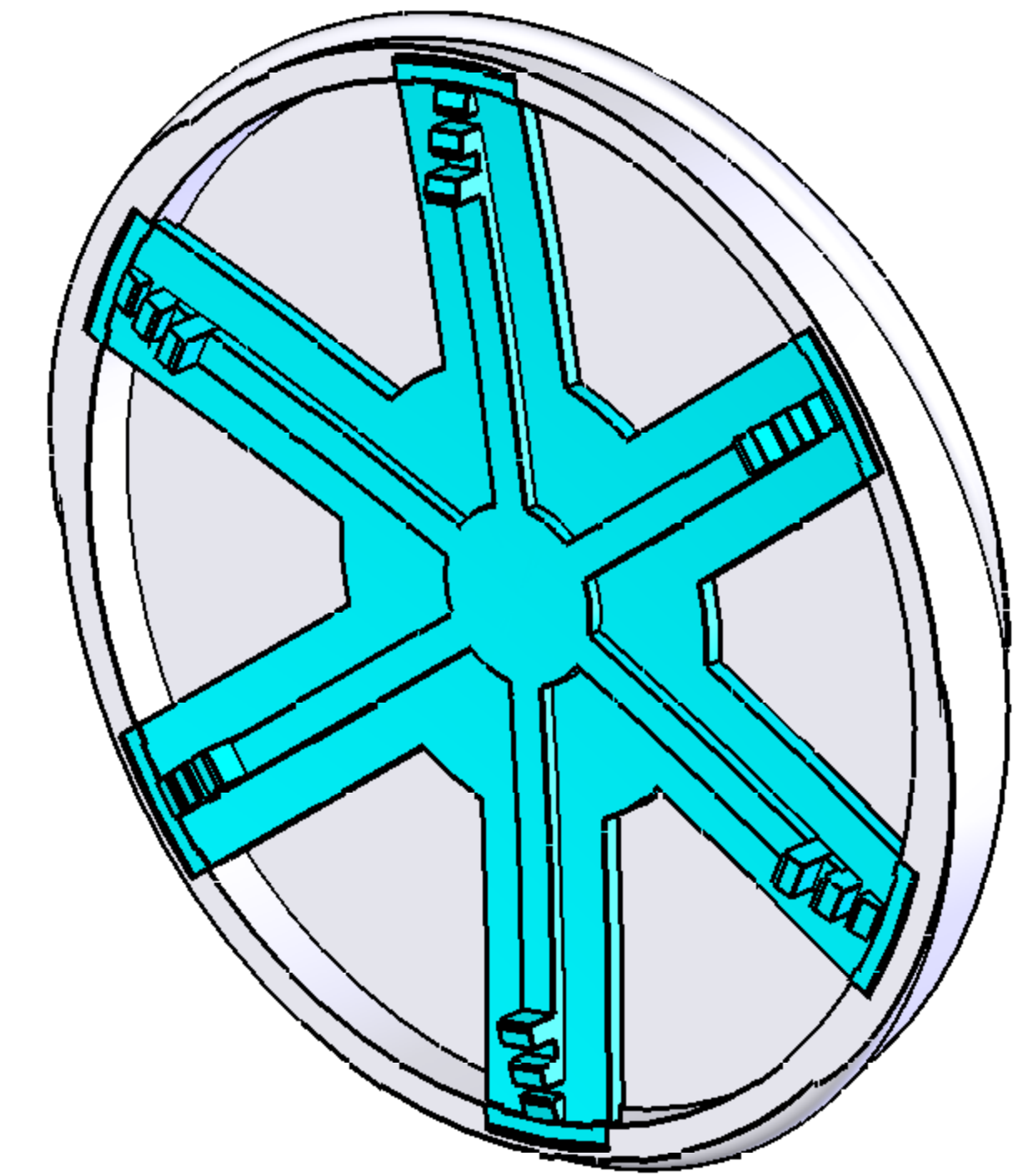


SECTION A-A

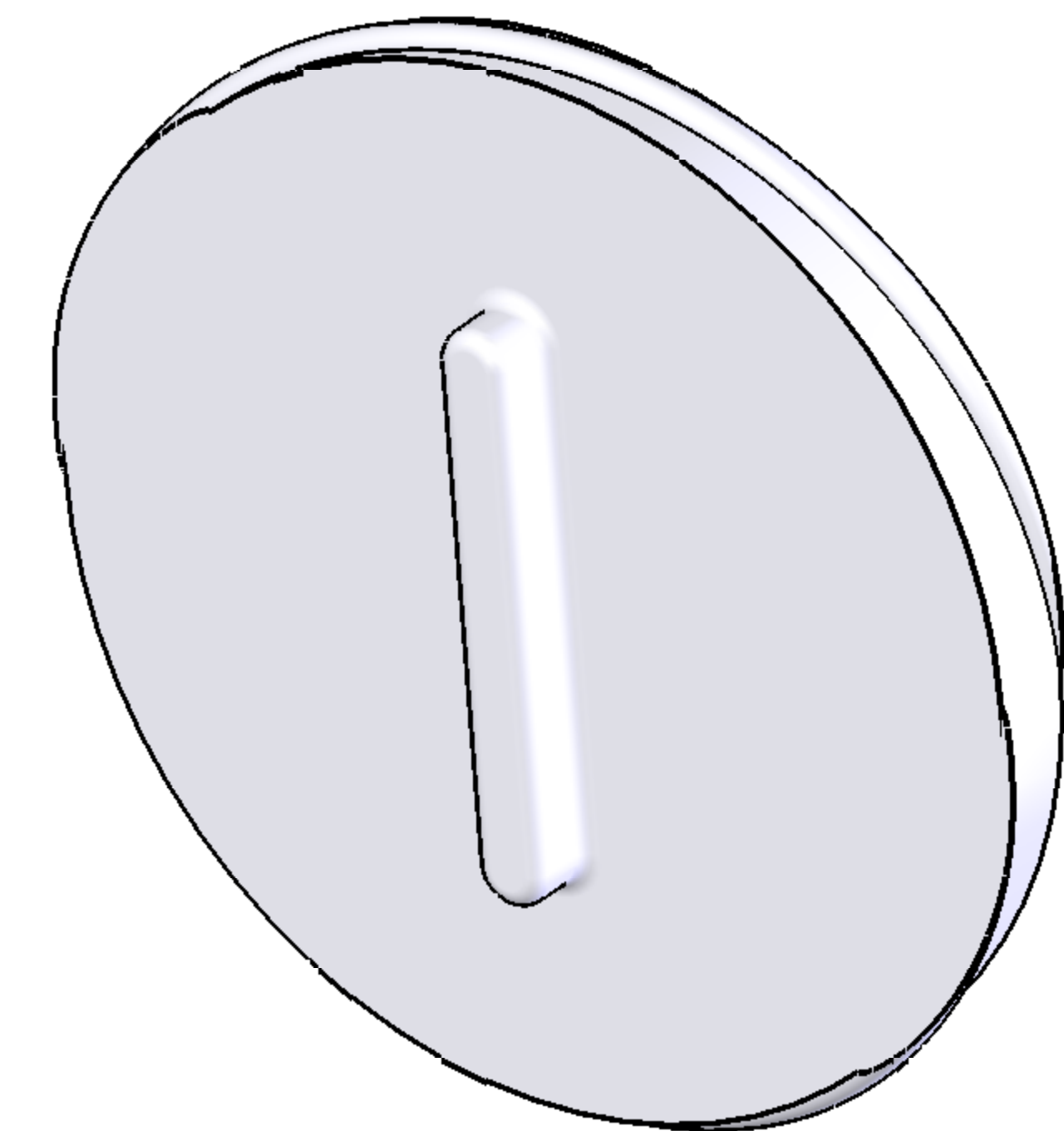


See Note #3

Note:

- 1) Material To be 64g/l density (4.0 lb/ft<sup>3</sup>) Static Dissipative EPS
- 2) 1 Degree Draft TYP
- 3) Flexy-Spring Contacts can be adjusted for 276mm, 304mm, 330mm, 338mm Diameters.

DETAIL A  
SCALE 2:1



**PROPRIETARY AND CONFIDENTIAL**

THE INFORMATION CONTAINED IN THIS DRAWING IS THE SOLE PROPERTY OF Tempo Plastic Co. Inc. ANY REPRODUCTION IN PART OR AS A WHOLE WITHOUT THE WRITTEN PERMISSION OF Tempo Plastic Co. Inc IS PROHIBITED.

UNLESS OTHERWISE SPECIFIED:		NAME	DATE
DIMENSIONS ARE IN Millimeters		Junior	7/30/07
TOLERANCES:		CHECKED	
FRACTIONAL ±		ENG APPR.	
ANGULAR MATCH ±	BEND ±	MFG APPR.	
TWO PLACE DECIMAL ±			
THREE PLACE DECIMAL ±			
INTERPRET GEOMETRIC TOLERANCING PER:			
MATERIAL			
	1227 N. Miller Park Ct.		
	Visalia, CA 93291		
NEXT ASSY	USED ON	FINISH	
APPLICATION			

Tempo Plastic Co, Inc.	
TITLE:	1R-12000 Lid
SIZE	D
DWG. NO.	
REV	A
SCALE: 1:1	SHEET 1 OF 1